



Cleco Pulse Tools = Productivity

The Cleco D Series pulse tool family combines our legendary durability with our customer's increasing demands for productivity.

Industry first motor design and revolutionary preventative maintenance distance the new D Series from the competition. With outstanding ergonomics, you'll never want to put this tool down.

D Series redefines productivity by performing the job faster and staying on the job longer.

Designed to assemble products where quality, high production and efficiency are paramount, these tools prove their value over and over. Consistent performance, unmatched durability and ease of use and maintenance make these tools the tools of choice.

■ Broad Tool Selection

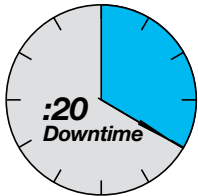
With a variety of shut-off and nonshut-off pulse tools to choose from you're sure to find just the right Cleco pulse tool for the job.



3X Increase Between Oil Changes

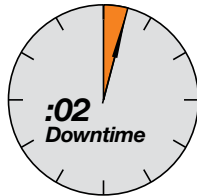
- Adjustable pulse chamber volume
- Tool achieves full torque after preventative maintenance
- No special tools required

The average tool is out of service almost 20 minutes for maintenance of hydraulic impulse unit.



Average Tool

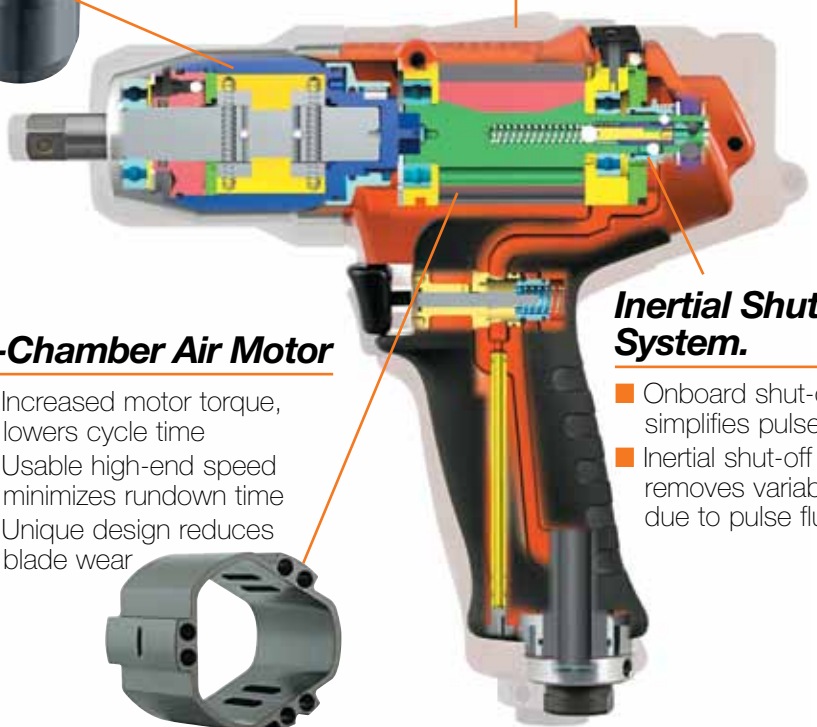
With Cleco's patented design, maintenance time is only 2 minutes!



New Cleco D Series



The new D Series, shown actual size, is considerably smaller and lighter than the old 55PTH ghosted in the background.



3-Chamber Air Motor

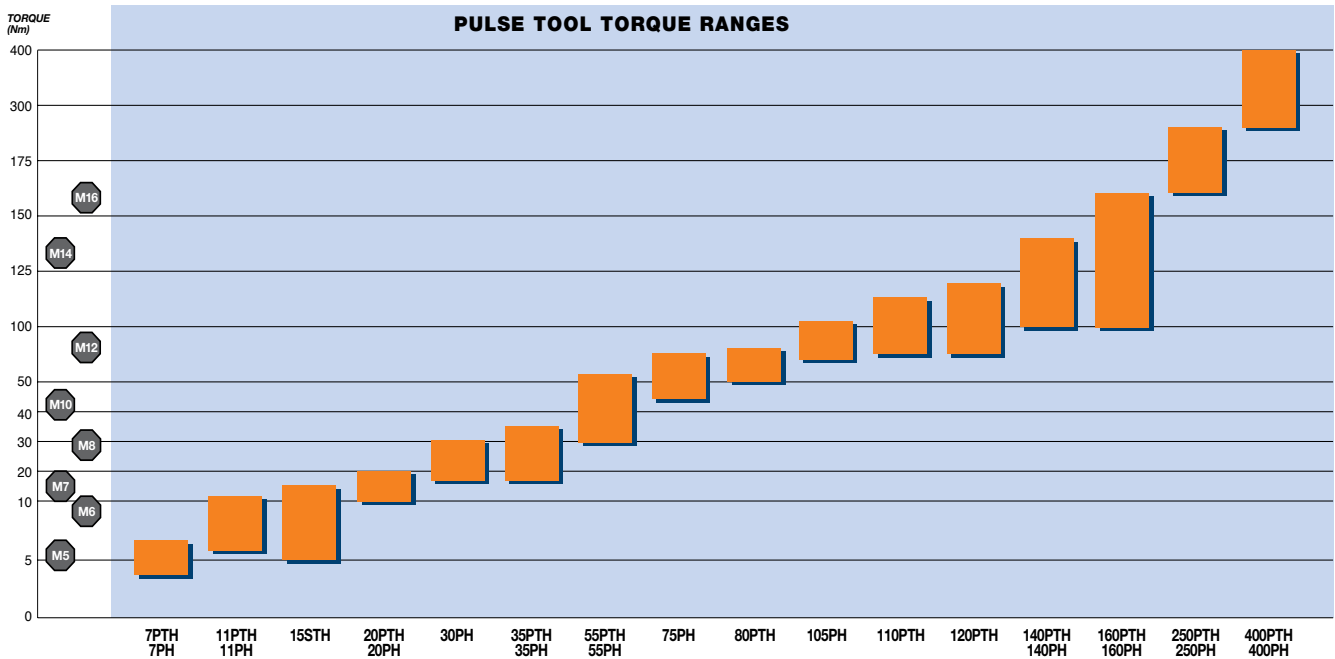
- Increased motor torque, lowers cycle time
- Usable high-end speed minimizes rundown time
- Unique design reduces blade wear

Inertial Shut-off System.

- Onboard shut-off simplifies pulse unit
- Inertial shut-off removes variability due to pulse fluid

Low Vibration Levels

Double chamber hydraulic units and 3-chamber motors mean extremely low vibration levels are achieved. This aids in preventing Cumulative Trauma Disorders (CTDs).



Low Noise Levels

Noise levels of these tools are well below standard air tools for an operator-friendly environment. There is no loud metallic hammering under load.



Ships Ready For Error Proofing

- Works with existing TVP torque verifier
- Located near air inlet to maximize ergonomics



Standard air signal indicating tool shutoff for use with Cleco TVP Error Proofing System.

Easy Set-Up

- Insert 2mm hex into rear port of tool
- Positive stops in both directions to prevent loss and/or damage



Adjustable Motor Speed

- Easily adjustable motor speed to insure accuracy on hard joints
- Can be locked in place to prevent accidental adjustment



Pulse Nutrunners


Hydraulic Pulse Shut-Off & Non Shut-Off



D-Series

Torque Range:
6 - 120 Nm
4.4 - 88.5 Ft. Lbs

Bolt Size:
M5 - M12
#10 - 1/2"


- Inertia shut-off
- External torque adjustment
- External speed control
- Reversible
- Torque signal port
- Adjustable pulse unit volume simplifies maintenance
- Oilless blades 



C-Series PTH & STH

Torque Range:
100 - 400 Nm
74 - 295 Ft. Lbs

Bolt Size:
M12 - M20
1/2" - 3/4"


- Hydraulic pulse shut-off
- Motor governor equipped
- External torque adjustment
- External speed control
- Reversible
- Oilless blades 
- Torque signal port



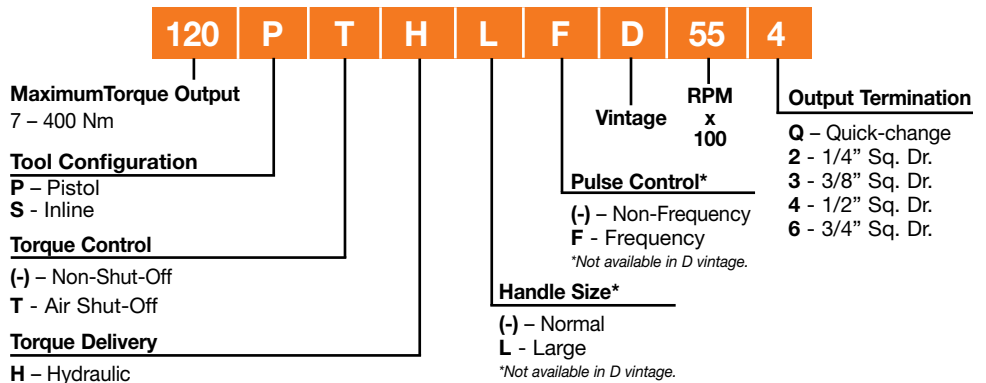
C-Series PH Non-Shut-Off

Torque Range:
4 - 400 Nm
3 - 295 Ft. Lbs

Bolt Size:
M5 - M18
#10 - 3/4"

- External speed control
- Reversible
- Oilless blades 

Model Number Nomenclature



Model Number	Drive Type*	Torque Range		Free Speed	Weight*		Air Consumption		
		Ft.Lbs.	Nm		RPM	lbs.	kg	NPT	Hose I.D.
D-Series – Pistol Grip – Shut-off Models									
11PTH65Q	1/4" QC	4.4-8.1	6-11	6500	1.87	0.85	1/4"	3/8"	12.3
11PTH652	1/4" Sq.Dr.	4.4-8.1	6-11	6500	1.87	0.85	1/4"	3/8"	12.3
11PTH653	3/8" Sq.Dr.	4.4-8.1	6-11	6500	1.87	0.85	1/4"	3/8"	12.3
20PTH75Q	1/4" QC	7.3-14.7	10-20	7500	1.92	0.87	1/4"	3/8"	12.3
20PTH753	3/8" Sq.Dr.	7.3-14.7	10-20	7500	1.90	0.86	1/4"	3/8"	12.3
35PTH65Q	1/4" QC	14.7-25.8	20-35	6500	2.2	1.0	1/4"	3/8"	16.0
35PTH653	3/8" Sq.Dr.	14.7-25.8	20-35	6500	2.2	1.0	1/4"	3/8"	16.0
55PTH603	3/8" Sq.Dr.	22.1-40.5	30-55	6000	2.4	1.1	1/4"	3/8"	19.0
80PTH60Q	7/16" QC	36.9-59.0	50-80	6000	3.2	1.45	1/4"	3/8"	19.0
80PTH604	1/2" Sq.Dr.	36.9-59.0	50-80	6000	3.1	1.4	1/4"	3/8"	19.0
110PTH55Q	7/16" QC	55.3-81.1	75-110	5500	3.75	1.7	3/8"	1/2"	30.0
120PTH554	1/2" Sq.Dr.	55.3-81.1	75-120	5500	3.75	1.7	3/8"	1/2"	30.0
C-Series – Pistol Grip – Shut-off Models									
140PTH25Q	7/16" QC	74-103	100-140	2500	5.7	2.6	3/8"	1/2"	25.4
160PTH256	3/4" Sq.Dr.	74-118	100-160	2500	5.7	2.6	3/8"	1/2"	25.4
C-Series – Pistol Grip – Shut-off Models – Trigger Throttle									
250PTHFC226	3/4" Sq.Dr.	118-184	160-250	2200	8.8	4.0	3/8"	1/2"	33.5
400PTHFC206	3/4" Sq.Dr.	185-295	250-400	2000	11.7	5.3	3/8"	1/2"	33.5
C-Series – In-Line – Push-to-Start									
7STHFA55Q	1/4" QC	1.9-4.9	2.6-6.6	5500	1.8	0.83	1/8"		7.0
35STHFA40Q	7/16" QC	12-26	15-35	4000	3.1	1.4	1/4"	3/8"	15.9
35STHFA404	1/2" Sq.Dr.	12-26	15-35	4000	2.9	1.3	1/4"	3/8"	15.9
C-Series – In-Line – Lever									
7STHFC55Q	1/4" QC	1.9-4.9	2.6-6.6	5500	2.1	0.93	1/8"		7.0
15STHFC40Q	1/4" QC	3.6-11	5.0-15	4000	2.4	1.1	1/4"	3/8"	16.5
35STHFC40Q	7/16" QC	12-26	15-35	4000	3.3	1.5	1/4"	3/8"	15.9
35STHFC404	1/2" Sq.Dr.	12-26	15-35	4000	3.3	1.5	1/4"	3/8"	15.9
15STHFC40Q	1/4" QC	3.6-11	5.0-15	3000	2.4	1.1	1/4"	3/8"	16.5

(*) Approximate values. Some variance may occur between square and Q drives.

General:
Tool performance rated @ 87 psi (6 bar) air pressure.

Standard Equipment:
Suspension bail and torque adjusting wrench.
Torque signal port (pistol grip models only)

Optional Equipment:
Additional accessories: Page 62

Model Number	Drive Type*	Torque Range		Free Speed	Weight*		Air Consumption		
		Ft.Lbs.	Nm		RPM	lbs.	kg	NPT	Hose I.D.
C-Series – Pistol Grip – Non-Shut-off Models									
7PHL90Q	1/4" QC	3.0-5.2	4-7	9000	1.8	0.8	1/4"	3/8"	8.8
11PHL80Q	1/4" QC	4.4-8.1	6-11	8000	1.9	0.9	1/4"	3/8"	8.8
11PHL802	1/4" Sq.Dr.	4.4-8.1	6-11	8000	1.9	0.9	1/4"	3/8"	8.8
20PHL70Q	1/4" QC	7.4-14	10-20	7000	2.3	1.1	1/4"	3/8"	15.9
20PHL703	3/8" Sq.Dr.	7.4-14	10-20	7000	2.3	1.1	1/4"	3/8"	15.9
30PHL70Q	1/4" QC	13-22	17-30	7000	2.6	1.2	1/4"	3/8"	15.9
35PHL703	3/8" Sq.Dr.	13-26	17-35	6500	2.6	1.2	1/4"	3/8"	15.9
55PHL60Q	7/16" QC	22-40	30-55	6000	3.7	1.7	1/4"	3/8"	21.2
55PHL604	1/2" Sq.Dr.	22-40	30-55	6000	3.7	1.7	1/4"	3/8"	21.2
75PHL50Q	7/16" QC	33-55	45-75	5000	4.0	1.8	1/4"	3/8"	19.4
75PHL504	1/2" Sq.Dr.	33-55	45-75	5000	4.0	1.8	1/4"	3/8"	19.4
105PH55Q	7/16" QC	52-77	70-105	5500	5.3	2.4	3/8"	1/2"	24.7
105PH554	1/2" Sq.Dr.	52-77	70-105	5500	5.3	2.4	3/8"	1/2"	24.7
140PH45Q	7/16" QC	74-103	100-140	4500	5.7	2.6	3/8"	1/2"	31.7
160PH456	3/4" Sq.Dr.	74-118	100-160	4500	5.7	2.6	3/8"	1/2"	31.7
250PHF406	3/4" Sq.Dr.	118-184	160-250	4000	8.6	3.9	3/8"	1/2"	40.6
400PHF356	3/4" Sq.Dr.	184-295	250-400	3500	11.5	5.2	3/8"	1/2"	42.3

(*) Approximate values. Some variance may occur between square and Q drives. For 7-75 Series Models, small handle can be ordered by substituting "S" for "L" in model number.

General:
Tool performance rated @ 87 psi (6 bar) air pressure.

Standard Equipment:
Suspension bail and torque adjusting wrench.

Optional Equipment:
Additional accessories: Page 60

Pulse Tool Accessories

D Series Maintenance Items

Pulse Tool	Pulse Unit	Air Motor	Pulse Repair Kit	Motor Repair Kit	Filler Connector
7PTH602	935953	935955	935717	935957	931968
7PTH60Q	935952	935955	935717	935957	931968
11PTH75Q	935701	935958	935717	935716	931968
11PTH752	935700	935958	935717	935716	931968
11PTH753	935702	935958	935717	935716	931968
20PTH75Q	935703	935687	935717	935716	931968
20PTH753	935704	935687	935717	935716	931968
35PTH65Q	935485	935408	935495	935494	931968
35PTH653	935484	935408	935495	935494	931968
55PTH603	935483	935408	935493	935492	931968
80PTH60Q	935640	935635	935656	935655	935718
80PTH604	935641	935635	935656	935655	935718
110PTH55Q	935642	935657	935654	935653	935718
120PTH554	935643	935657	935654	935653	935718

Rubber Tool Stand



Part Number	Tool Series
931041 (one piece)	C Series 7PTH - 105PTH/PH D Series 7PTH - 120PTH
930119 (two pieces)	C Series 140/160PTH/PH/ 250PTH / 400PTH

Hydraulic Oil

Part Number	Container Size
539317	One Quart



Torque Signal Kit

Air signal to indicate shut-off.

Part Number	Tool Series
934918	PTH series pulse tools (C & D vintage shut-off tools only)

7/16" Quick Change Chuck Adapter

Part Number	Tool Series
935472	To convert 55PTH603 to a Quick-Change chuck



Hydraulic Filler Unit

Part Number			C Series Tools
Filler Unit Only	Connector Only	Filler Unit Complete	
928483	931968	542523	7/11PTH/PH/SH 20/35PTH/PH/SH
928483	932072	928477	55/75PTH/PH 105/140/160PTH/PH



Covers

Part Number	Fits Model
544074-1	11PTH, 20PTH
544074-2	35PTH, 55PTH
544074-3	90PTH, 110PTH, 120PTH

